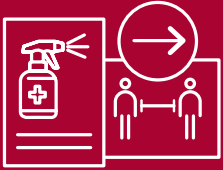


General Covid measures we have taken

The safety and long term health of our staff, respondents and clients is our utmost concern. We have implemented the required measures to conduct research in a safe and clean environment, whilst maintaining social distancing and protecting the health and wellbeing of all people entering our facilities.



Clear signage outlining measures in place



Sanitising station on arrival and in every room and toilets



Dedicated member of staff at entrance to ensure social distancing



Staff have completed training in prevention of Covid-19



Staff will wear PPE in appropriate situations



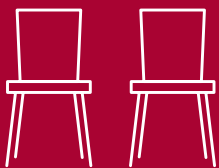
Separate social distancing reception area per studio



Traffic light system for toilet use



Single use stationery



Chairs sanitised before use



Individual drinks and packaged catering



We will provide electronic copies of completed tasks (and originals destroyed)



Payment of incentives by bank transfer is suggested



Groups and viewing numbers adhering to Government guidelines



Antibacterial cleaning of the facility throughout the day

Spectrum

LONDON | LEEDS

For bookings call 020 7467 5440 or for more information visit spectrumview.co.uk